

MINISTRY PLAYBOOK

PRAYER TEAM

SEPTEMBER 2023 // WORKING DOCUMENT
THIS PLAYBOOK IS STILL IN DEVELOPMENT



GRACE CHURCH

STATEMENTS & VALUES

Vision Statement

We are one church in many locations, multi-cultural and multi-generational, spreading the hope of Jesus until everyONE hears.

Mission Statement

We want everyone to Encounter God, Grow in Grace and Knowledge, Engage in Community, and Go Make a Difference.

ISSUED BY:
GRACE CHURCH // SEPT 2023

WORKING DOCUMENT
THIS PLAYBOOK IS STILL IN
DEVELOPMENT

YOUR JOURNEY AT GRACE

ENCOUNTER

Salvation.

Baptism.

New Believer's Course.

GROW

Membership Class.

Campus Social.

ENGAGE

Life Groups.

Freedom.

The ONETeam.

GO

Family.

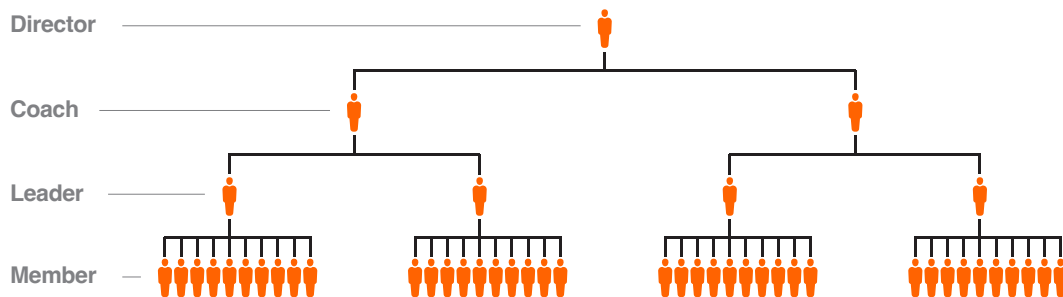
Community.

Missions.

ISSUED BY:
GRACE CHURCH // SEPT 2023

WORKING DOCUMENT
THIS PLAYBOOK IS STILL IN
DEVELOPMENT

THE LEADERSHIP PIPELINE



Director.

ONETeam Directors provide leadership, development and accountability for ONETeam Coaches. As a member of the Campus Lead Team, these Directors turn strategy into action and ensure the objectives of the ministry playbooks are met.

Coach.

ONETeam Coaches support ONETeam Leaders. These dynamic individuals are focused on leading teams of 1 to 5 ONETeam Leaders.

Leader.

Teams are made up of no more than 10 Members, led by a ONETeam Leader. The role of the Leader is critical to “running the play” for the ministry.

Member.

The backbone of volunteerism at Grace Church is The ONETeam Member! These are the hands and feet of ministry.

This illustration represents the Leadership Pipeline in an ideal state. This will be developed over time with Campus Leadership.

STATEMENT OF PURPOSE

The Prayer Team supports an environment of faith for people who respond to the altar call. The goal is to meet people at their expressed point of need and to agree with them in prayer according to the Word of God.

ISSUED BY:
GRACE CHURCH // SEPT 2023

WORKING DOCUMENT
THIS PLAYBOOK IS STILL IN
DEVELOPMENT

ROLES

Team Organization Chart

Campus Pastor

**Associate Campus
Pastor/Director**

**Member Care
Director**

Prayer Coach

Prayer Leader

Prayer Member

ISSUED BY:
GRACE CHURCH // SEPT 2023

WORKING DOCUMENT
THIS PLAYBOOK IS STILL IN
DEVELOPMENT

POSITIONS

Below are the roles associated with the organization chart above. Remember, this pipeline is designed to scale with the size of the department and campus. These roles have been listed in order of what is recommended to scale to.

Member Care Director

Provides oversight, direction, and pastoral preference for each service. They work directly with Coaches to turn strategy into action and ensure the objectives for the ministry Playbook is met.

Prayer Coach

Support Team Leaders by communicating the strategy and how to implement the guidelines from the Prayer Team Playbook.

Prayer Leader

Equips each Team Member with knowledge of prayer team guidelines. They also provide biblical solutions to special circumstances that may arise during time of prayer.

Prayer Member

Agree with church members and guests according to scripture and follow guidelines as outlined by the Team Leaders.

ISSUED BY:
GRACE CHURCH // SEPT 2023

WORKING DOCUMENT
THIS PLAYBOOK IS STILL IN
DEVELOPMENT

POSITIONS

RESPONSIBILITIES

Before Service

Attend the pre-service huddle held prior to each service with your Prayer Leader. Please prepare your heart to serve before arriving at church with prayer, worship, and declaring scripture. Please inform your Prayer Leader of any scheduling conflicts or absences.

During Service

Once the speaking pastor or worship leader requests the team, come forward. As much as possible, women should pray with women and men with men. Introduce yourself and ask for their first name and how we can agree with them in prayer. Then pray for their expressed need according to scripture, and please pray within 2-3 minutes. All prayer requests should be kept with the highest confidentiality.

After Service

Wait until your Team Leader requests for you to come back to your seat. Report to your Prayer Leader with any salvation numbers, special concerns, or occurrences.

ISSUED BY:
GRACE CHURCH // SEPT 2023

WORKING DOCUMENT
THIS PLAYBOOK IS STILL IN
DEVELOPMENT

RESPONSIBILITIES

ENVIRONMENTS /MATERIALS

Please speak with your Prayer Leader if the need for anointing oil is requested during prayer.

Special Circumstances

Any financial, counseling, or Member Care needs should all be directed to the Welcome Desk. Please do not share your personal information with anyone. For any special circumstances, please contact your Prayer Leader.

ISSUED BY:
GRACE CHURCH // SEPT 2023

WORKING DOCUMENT
THIS PLAYBOOK IS STILL IN
DEVELOPMENT

ENVIRONMENT
/MATERIALS