

MINISTRY PLAYBOOK

GRACE YOUNG ADULTS

SEPTEMBER 2023 // WORKING DOCUMENT
THIS PLAYBOOK IS STILL IN DEVELOPMENT



GRACE CHURCH

STATEMENTS & VALUES

Vision Statement

We are one church in many locations, multi-cultural and multi-generational, spreading the hope of Jesus until everyONE hears.

Mission Statement

We want everyone to Encounter God, Grow in Grace and Knowledge, Engage in Community, and Go Make a Difference.

ISSUED BY:
GRACE CHURCH // SEPT 2023

WORKING DOCUMENT
THIS PLAYBOOK IS STILL IN
DEVELOPMENT

YOUR JOURNEY AT GRACE

ENCOUNTER

Salvation.

Baptism.

New Believer's Course.

GROW

Membership Class.

Campus Social.

ENGAGE

Life Groups.

Freedom.

The ONETeam.

GO

Family.

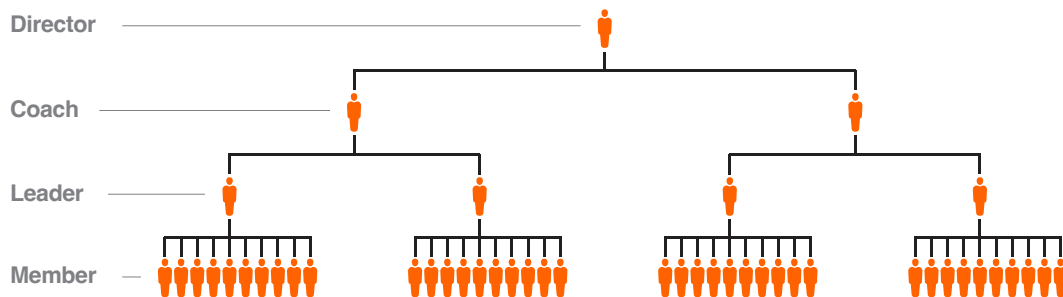
Community.

Missions.

ISSUED BY:
GRACE CHURCH // SEPT 2023

WORKING DOCUMENT
THIS PLAYBOOK IS STILL IN
DEVELOPMENT

THE LEADERSHIP PIPELINE



Director.

ONETeam Directors provide leadership, development and accountability for ONETeam Coaches. As a member of the Campus Lead Team, these Directors turn strategy into action and ensure the objectives of the ministry playbooks are met.

Coach.

ONETeam Coaches support ONETeam Leaders. These dynamic individuals are focused on leading teams of 1 to 5 ONETeam Leaders.

Leader.

Teams are made up of no more than 10 Members, led by a ONETeam Leader. The role of the Leader is critical to “running the play” for the ministry.

Member.

The backbone of volunteerism at Grace Church is The ONETeam Member! These are the hands and feet of ministry.

This illustration represents the Leadership Pipeline in an ideal state. This will be developed over time with Campus Leadership.

ISSUED BY:
GRACE CHURCH // SEPT 2023

WORKING DOCUMENT
THIS PLAYBOOK IS STILL IN
DEVELOPMENT

STATEMENT OF PURPOSE

Grace YA will be where young adults who have graduated high school will encounter God, grow in grace & knowledge, engage in community, and go make a difference until everyone hears the Gospel of Jesus Christ.

We accomplish this in 3 simple ways:

- 1. Evangelism*
- 2. Discipleship*
- 3. Deployment*

ROLES

Team Organization Chart

Campus Pastor

**Associate Campus
Pastor/Director**

**Next Generations
Director**

**Young Adult
Coach**

**Young Adult
Leader**

**Young Adult
Member**

ISSUED BY:
GRACE CHURCH // SEPT 2023

WORKING DOCUMENT
THIS PLAYBOOK IS STILL IN
DEVELOPMENT

POSITIONS

Below are the roles associated with the organization chart above. Remember, this pipeline is designed to scale with the size of the department and campus. These roles have been listed in order of what is recommended to scale to.

Next Generation Director

This individual oversees all YA initiatives at the campus and will work with the Central Next Generation Team to plan and execute YA Socials.

YA Coach

Oversees all YA Life Group Leaders at the campus. They will ensure Life Group Leaders are resourced and consistently engaging with their groups on-site and off-site. Coaches will train new Team Leaders and will work with the Central Next Generation Team and Campus Next Generation Director with planning and executing YA Socials.

Life Group Leader

This individual is responsible for leading a YA Life Group at a campus. They will assist the YA Coach with promoting and executing events YOU to care for.

RESPONSIBILITIES

As we serve the young adults at Grace Church, our strategy is to meet them where they are with programming that is engaging and excellent. Below are all the ways in which we fulfill our responsibilities to Grace YA.

Life Groups

YA specific Life Groups should be developed at all campuses. Life Groups are a group of friends who you can laugh, learn, and be yourself with. By joining a Life Group you are welcomed into an environment where you can be exactly who God has made you to be.

Life Groups are “free market” and should follow the same guidelines as the rest of our adult Life Groups.

YA Socials

YA Socials happen three times a year, in the spring, summer, and fall. These events are focused on engaging the YA community of our church and outside of our church in community. The focus is on relationships and fun! All of our campuses will come together and there is an added focus on inviting friends and pushing new members or unconnected members into Life Groups!

Andrizo/Adanna

Andrizo and Adanna are incredible ministries that focus on both the men and women of Grace to encounter God in a much more impactful way. We will actively promote attending a camp to all of our YA attendees.

ISSUED BY:
GRACE CHURCH // SEPT 2023

WORKING DOCUMENT
THIS PLAYBOOK IS STILL IN
DEVELOPMENT

RESPONSIBILITIES

ENVIRONMENTS /MATERIALS

Connections

It's all about the points of contact. Every individual who walks in the door has a face and a name. You want them to know they matter to you. You're aware that this can have a tangible impact on how well people engage with your church and with God long term.

Connect with first-time guests through follow-up strategy.

Ensuring that the information area, signage, and key areas are clear, current, and focused on new people.

Creating and continuously improving follow-up methods to ensure that anyone new has information to join a YA Life Group.

Connect YA into Church (small groups, events, next steps, serving.)

Helping YA discover their spiritual gifts, passions, and callings and the importance of development as followers of Christ and as carriers of His mission in preparation for ministry.

Track Metrics

Ensuring that both volunteer and YA attendance is tracked at all events.

Ensuring that salvations are tracked at all events.

Ensuring first-time guests are tracked at all events.

ISSUED BY:
GRACE CHURCH // SEPT 2023

WORKING DOCUMENT
THIS PLAYBOOK IS STILL IN
DEVELOPMENT

ENVIRONMENT
/MATERIALS

Build A Team

Leading, equipping, and empowering connections volunteers in providing high-impact first impressions.

Care for a Team

Make sure the YA Team is cared for and feels connected. Follow up with Coaches, Team Leaders and Team Members to make sure they're reaching out to their teams and church members.

**ISSUED BY:
GRACE CHURCH // SEPT 2023**

**WORKING DOCUMENT
THIS PLAYBOOK IS STILL IN
DEVELOPMENT**

**ENVIRONMENT
/ MATERIALS**